

# SA2020<sup>®</sup>

## Community Report Card

Released January 19, 2018

### ARTS & CULTURE



INCREASE FUNDING	
INCREASE ATTENDANCE	
INCREASE ECONOMIC IMPACT	
INCREASE EMPLOYMENT IN CREATIVE INDUSTRIES	
IMPROVE SATISFACTION WITH ARTS & CULTURE	

In 2020, San Antonio leads the world as a creative community.

### CIVIC ENGAGEMENT



INCREASE VOTER TURNOUT	
INCREASE DIVERSITY OF ELECTED OFFICIALS	
INCREASE VOLUNTEERISM	
INCREASE PHILANTHROPIC GIVING	

In 2020, San Antonio's residents are deeply engaged as elected leaders, business leaders, volunteers, and voters in the process of making government more responsive and accountable to San Antonians.

### COMMUNITY SAFETY



INCREASE ATTENDANCE AT COMMUNITY SAFETY	
REDUCE RECIDIVISM	
REDUCE EMERGENCY RESPONSE TIMES	
REDUCE INDEX CRIME RATE	
DECREASE DOMESTIC VIOLENCE	
IMPROVE SATISFACTION WITH COMMUNITY SAFETY	

In 2020, San Antonio is the safest big city in America.

### DOWNTOWN DEVELOPMENT



INCREASE DOWNTOWN HOUSING UNITS	
INCREASE GREATER DOWNTOWN AREA POPULATION	
REDUCE DOWNTOWN CRIME RATE	
INCREASE DOWNTOWN EMPLOYMENT	
INCREASE DOWNTOWN ECONOMIC IMPACT	

In 2020, Downtown is the heart of San Antonio and is everyone's neighborhood. It is a showcase for visitors, a center of vibrant activity for residents to live, work and play, and an economically inviting locale for businesses to flourish.

### ECONOMIC COMPETITIVENESS



INCREASE PER CAPITA INCOME	
INCREASE EMPLOYMENT IN TARGET INDUSTRIES	
INCREASE ENTREPRENEURSHIP	
INCREASE PROFESSIONAL CERTIFICATES	
EXPAND STEM ECONOMY	
REDUCE UNEMPLOYMENT	

In 2020, San Antonio is recognized as a leader in business that prospers through innovation in 21st century industries. San Antonio has a highly qualified and educated workforce and provides economic opportunity for all of its residents.

### EDUCATION



IMPROVE KINDERGARTEN READINESS	
IMPROVE 3RD GRADE READING	
INCREASE HIGH SCHOOL GRADUATION RATE	
IMPROVE COLLEGE READINESS	
INCREASE COLLEGE ENROLLMENT	
INCREASE ADULTS WITH COLLEGE DEGREES	

In 2020, San Antonio has orchestrated one of the greatest turnarounds in education in the United States. San Antonio provides access to quality education for all students no matter where they live in our city.

### ENVIRONMENTAL SUSTAINABILITY



INCREASE RENEWABLE ENERGY	
IMPROVE AIR QUALITY INDEX	
REDUCE WATER USE	
REDUCE ENERGY USE	
REDUCE RESIDENTIAL WASTE	
INCREASE RECYCLING RATES	
INCREASE DEVELOPMENT WITH LOW ENVIRONMENTAL IMPACT	
INCREASE EMPLOYMENT IN GREEN INDUSTRIES	

In 2020, San Antonio is recognized as a respectful steward of its natural resources and a model for responsible resource management. San Antonio promotes responsible growth and the use of sustainable environmental practices. Its strategy is based on an integrated approach that establishes a green economy and focuses on 3 key areas: water, energy, and land.

### FAMILY WELL-BEING



REDUCE POVERTY RATE	
REDUCE UNDEREMPLOYMENT	
REDUCE HOMELESSNESS	
DECREASE CHILD ABUSE	
REDUCE INCOME SEGREGATION	

In 2020, San Antonio is renowned as the best city to raise a family. Its neighborhoods are places where residents thrive in an ethnically, culturally and socioeconomically integrated environment.

### HEALTH & FITNESS



REDUCE OBESITY	
IMPROVE MATERNAL & CHILD HEALTH	
REDUCE DIABETES RATE	
REDUCE TEEN BIRTH RATE	
IMPROVE ACCESS TO HEALTH CARE	
REDUCE HEALTH & BEHAVIORAL RISKS	

In 2020, San Antonio residents are among the healthiest in the country.

### NEIGHBORHOODS



INCREASE INNER-LOOP HOUSING CONSTRUCTION	
INCREASE WALKABILITY	
IMPROVE ACCESS TO PARKS & GREEN SPACES	
IMPROVE DIGITAL ACCESS	
DECREASE HOUSING COST BURDEN	

In 2020, San Antonio is known for its cohesive neighborhoods with compelling and unique personalities.

### TRANSPORTATION

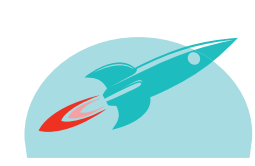


INCREASE COMPLETE STREETS	
DECREASE VEHICLE MILES TRAVELED	
DECREASE COMMUTE TIME	
INCREASE ALTERNATIVE TRANSIT USE	
ELIMINATE TRAFFIC FATALITIES AND SERIOUS INJURIES	

In 2020, San Antonio's transportation system is recognized as a model of efficiency and environmental sustainability.

This Report Card was finalized in December 2017 and provides a snapshot of where our community stands on our 2020 goals at the time of the most recent release of information, using the most recent data available from approximately 30 sources.

Data Partner  
**CI:NOW**



MET/  
EXCEEDED



ON TRACK



PROGRESS



FLAT/  
GETTING WORSE



BASELINE